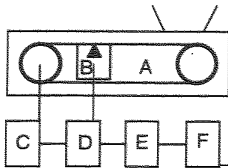




# HASLER K-SMART COMMANDER (KSC) in the SmartConnex™ control system

KSC  
technical sheet



- A Feeder (Example Weigh Belt Feeder)
  - B Weighing System
  - C Motor drive Unit
  - D Smart Control Module SCM
  - E Single Unit KSU
  - F K-Smart Commander KSC
- Ext. communication to Host System

Each HASLER Weigh feeder consists of the components A, B, C, D and E.

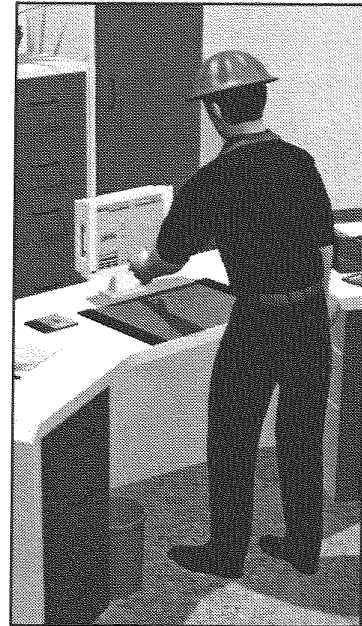
This technical data sheet describes component F

## KSC in the SmartConnex control system

A new generation of operator interfaces is introduced by Hasler to exploit the full power of SmartConnex. Options include the K-Smart Commander "KSC", a Windows-NT user interface for managing large feeder systems on multiple process lines. Single feeder and multiple feeder/single line interface options are also available.

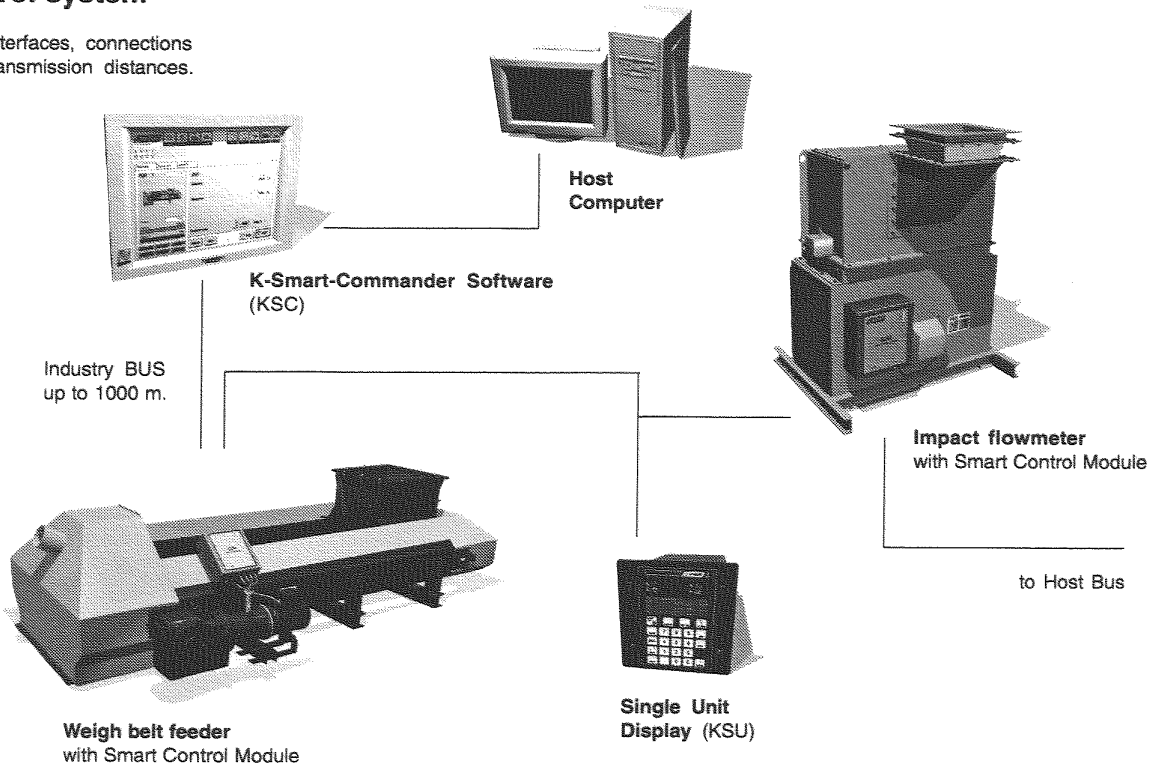
An industrial PC with KSC-Software inside the SmartConnex control system controls up to 30 HASLER weigh belt and loss-in-weight feeders, belt scales, impact and digital flowmeters, in both continuous and batch modes reliably according to registered setpoint values. A current industrial Pentium PC is required as hardware for the KSC software. KSC is a user programming of the process visualization software FIX 32 from Intellution for Windows NT 4.0.

Process data visualization is self-explanatory on the screen. Rapid information on the actual operation data of the linked units provides the desired process overview. A help programme can be called by touching a button in case questions arise. Recipe command, historical trends, statistical control, and alarm parameters are some of the great amount of possibilities offered by this software.



## Structure of the SmartConnex control system

with interfaces, connections and transmission distances.





# HASLER K-SMART COMMANDER (KSC) in the SmartConnex™ control system

KSC  
technical sheet

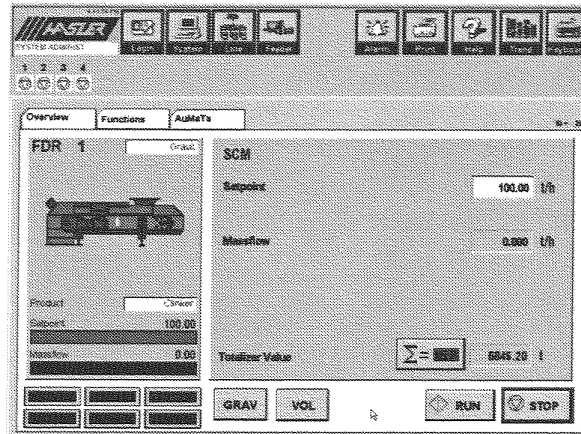
## Screen page: "Overview"

The K-Smart Commander is a user Software for the visualization and monitoring of HASLER feeders. It is based on the process visualization software FIX 32 from Intellution and available on CD-ROM.

An industrial PC set up according to given specifications is suitable as hardware. Depending on the hardware, data entry occurs via touch screen or mouse and keyboard.

Each feeder has its own overview page.

The right-hand example shows a page for a weigh belt feeder in a system with 4 feeders.



## Communication Protocols

The list of available protocols is constantly growing.

Protocol	Driver	Physical Layer	Board Required
Modicon Modbus 1	MB1	RS232/RS485	No (PC Serial Port or RS485 Board)
Modicon MODBUS Plus	MMP	Proprietary	Yes
Allen-Bradley Data Highway	ABH	RS232/RS485	No (PC Serial Port or RS485 Board)
Allen-Bradley Data Highway Plus	ABR	Proprietary (RS Linx)	Yes
OPC	OPC	Ethernet	Network (Ethernet)

## Screen organization

The communication levels are selected with icons. A level is set up like a file with index cards and tabs. Each field can be quickly selected by mouse click or touch.

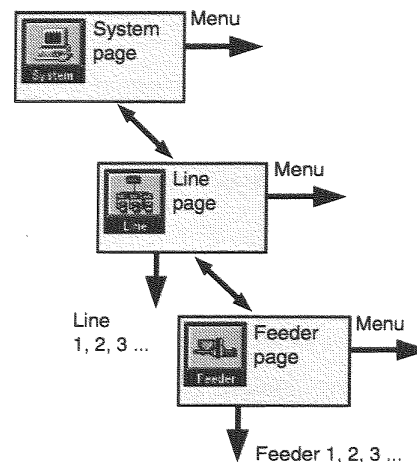
## Uses

Simple operation and short introduction time thanks to the self-explanatory layout of the screen pages.

Quick process overview through graphic depictions, which can be selected 'on line' at any time.

The KSC software is an open system, which means new requirements can be integrated.

## Structure



### Languages:

- German
- English
- French
- Spanish

## Hardware specifications

Pentium PC, Industrial version  
64...128 MB RAM; Hard disk 2 - 5 GB; CD-ROM Drive  
Windows NT, Version 4.0 (Service Pack 3)  
Mouse and keyboard or touch screen monitor

## Options

1. Industrial PC with touch screen monitor with KSC software
2. Industrial PC with monitor with KSC software
3. KSC software with dongle

**HASLER Suisse Sàrl**  
Rue du Puits-Godet 10a  
CH-2000 Neuchâtel  
**Switzerland**  
Tel. +41.(0)32.720.23.00  
Fax +41.(0)32.720.23.90  
E-mail : sales.ch@hasler-int.com

**HASLER Deutschland GmbH**  
Münsterstrasse 69  
D-49525 Lengerich  
**Germany**  
Tel. +49.(0)5481.805-0  
Fax +49.(0)5481.805-110  
E-mail : sales.de@hasler-int.com

**HASLER International SA**  
Z.I. de L'Abbaye  
38780 Pont-Evêque  
**France**  
Tel. +33 (0)4 74 16 11 50  
Fax +33 (0)4 74 16 11 55  
E-mail : sales.fr@hasler-int.com

**Your local Partner :**